

Agilent J2126A / J2127A

Remote Test Software

Installation Guide



Agilent Technologies

Notices

© Agilent Technologies UK Limited 2003

No part of this manual may be reproduced in any form or by any means (including electronic storage and retrieval or translation into a foreign language) without prior agreement and written consent from Agilent Technologies, Inc. as governed by United States and international copyright laws.

Manual Part Number

Not Applicable

Edition

Second edition (2.00), September 2003

Printed in UK

Agilent Technologies UK Limited
Transmission & Transport Test Operation
South Queensferry
West Lothian
Scotland
EH30 9TG

Warranty

The material contained in this document is provided "as is," and is subject to being changed, without notice, in future editions. Further, to the maximum extent permitted by applicable law, Agilent disclaims all warranties, either express or implied, with regard to this manual and any information contained herein, including but not limited to the implied warranties of merchantability and fitness for a particular purpose. Agilent shall not be liable for errors or for incidental or consequential damages in connection with the furnishing, use, or performance of this document or of any information contained herein. Should Agilent and the user have a separate written agreement with warranty terms covering the material in this document that conflict with these terms, the warranty terms in the separate agreement shall control.

Technology Licenses

The hardware and/or software described in this document are furnished under a license and may be used or copied only in accordance with the terms of such license.

Restricted Rights Legend

If software is for use in the performance of a U.S. Government prime contract or subcontract, Software is delivered and licensed as "Commercial computer software" as defined in DFAR 252.227-7014 (June 1995), or as a "commercial item" as defined in FAR 2.101(a) or as "Restricted computer software" as defined in FAR 52.227-19 (June 1987) or any equivalent agency regulation or contract clause. Use, duplication or disclosure of Software is subject to Agilent Technologies' standard commercial license terms, and non-DOD Departments and Agencies of the U.S. Government will receive no greater than Restricted Rights as defined in FAR 52.227-19(c)(1-2) (June 1987). U.S. Government users will receive no greater than Limited Rights as defined in FAR 52.227-14 (June 1987) or DFAR 252.227-7015 (b)(2) (November 1995), as applicable in any technical data.

Safety Notices

CAUTION

A **CAUTION** notice denotes a hazard. It calls attention to an operating procedure, practice, or the like that, if not correctly performed or adhered to, could result in damage to the product or loss of important data. Do not proceed beyond a **CAUTION** notice until the indicated conditions are fully understood and met.

WARNING

A **WARNING** notice denotes a hazard. It calls attention to an operating procedure, practice, or the like that, if not correctly performed or adhered to, could result in personal injury or death. Do not proceed beyond a **WARNING** notice until the indicated conditions are fully understood and met.

In This Guide

This document contains installation, verification and troubleshooting instructions for the **Remote Test Software** application as used to remotely access and control Agilent J2126A and J2127A Transmission Test Sets.

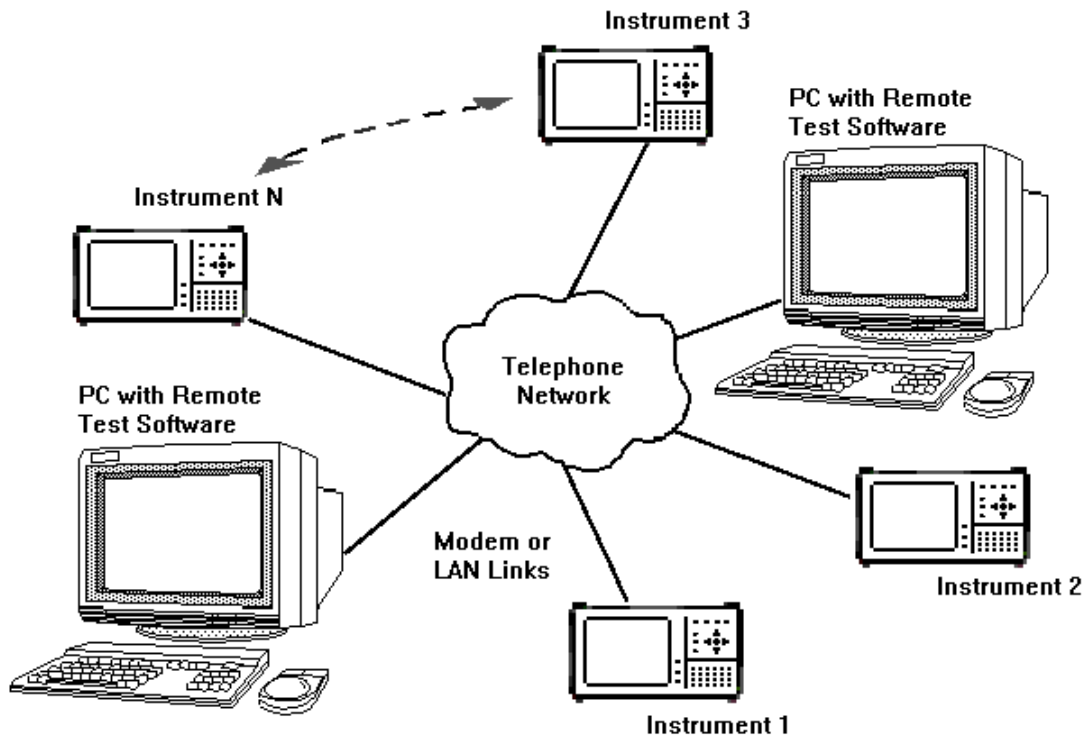
Upto date information and downloads for this product can be obtained from:

<http://www.agilent.com/find/J2126A-J2127A>

Contents

- 1 Introduction 5**
- 2 Installation 6**
 - PC Specification 6
 - Modem Specification 6
 - Installing the Remote Test Software 7
 - Installing the Sun Personal Java Emulation Environment 7
 - Verifying Installation 7
 - Compatibility with the Instrument Firmware 8
 - Adding to the Remote Test Software “RemoteGUI” Repository 8
- 3 Troubleshooting 10**
- 4 Contacting Agilent Customer Support 11**

1 Introduction



The Remote Test Software application enables you to control instruments from central sites. The diagram shows two PCs controlling instruments in a network. Communication between the PCs and instruments is by modem or LAN links.

You use the Remote Test Software to establish connections, assign identifying labels (makes instrument identification easy), change settings, view results, upload or download configurations or upgrade the software of instruments at various locations in the network.

2 Installation

The Remote Test Software application runs on a PC with Windows 98, XP, NT or 2000, and the Sun Personal Java Emulation Environment application. See PC Specification for minimum requirements.

You can install the Remote Test software application from CD-ROM or the web.

There are five procedures provided in this section:

- Installing the Remote Test Software
- Installing the Sun Personal Java Emulation Environment
- Upgrading the Instrument Software (if required)
- Verifying Installation

PC Specification

The minimum PC requirements are:

- Windows 98, XP, NT (SP5 or better) or 2000
- 500 MHz Pentium III
- 128 MB RAM
- 4 Gb HDD
- 1024 x 768 screen resolution
- 1600 x 1200 screen resolution (for viewing two remote instrument GUIs at the same time - "tiled")

Modem Specification

The minimum modem requirements are:

- Rate: 56kb/s
- Protocol: V.90 and V.92

Installing the Remote Test Software

Use the following procedure to install the Remote Test Software.

- 1 Download and save the latest Remote Test Software zip file from the web link referenced at the beginning of this guide.
- 2 Open the zip file and extract the contents to a temporary location on your PC.
- 3 If a **README.txt** file is included then you should read that first in order to get late breaking news concerning the current release.
- 4 Run the **RemoteTestSoftware.exe** file.
- 5 Accept the default choices during the installation. Note, that a shortcut is automatically added to your PC desktop at the end of the installation.

Installing the Sun Personal Java Emulation Environment

Use the following procedure to install the Sun Personal Java Emulation Environment from the web.

- 1 Go to the following web link:
[http://java.sun.com/products/personaljava/pj-emulation.html - pjee3.1](http://java.sun.com/products/personaljava/pj-emulation.html-pjee3.1)
- 2 From the **Download PersonalJava Emulation Environment v 3.1** choice, select **Windows/X86, Win32**.
- 3 Press **continue**.
- 4 Press **ACCEPT**.
- 5 Press the **HTTP** or one of the **FTP** buttons.
- 6 Press **Save** on the download dialog.
- 7 Run the **pjee3_1-win-nonrom.exe** file once the download is complete (accept all default directory settings).

Verifying Installation

Use the following procedure to verify that the Remote Test Software has been correctly installed.

- 1 Ensure an instrument is connected on the network and can be “seen” by your PC. (See your system administrator for network connection advice and verification using “ping”).
- 2 From your PC, run the **Remote Test Software** application
- 3 From the menu select **Instrument->New Instrument**.
- 4 Enter the instrument's IP Address, Name and Location, press **OK**.
- 5 From the menu select **Instrument->Connect**.
- 6 The LED in the **Instrument Manager - Status** column is colored green for a successful connection.
- 7 From the menu select **Tools->New Remote GUI**.
- 8 The Remote GUI will appear if the instrument is compatible and PersonalJava is correctly installed.

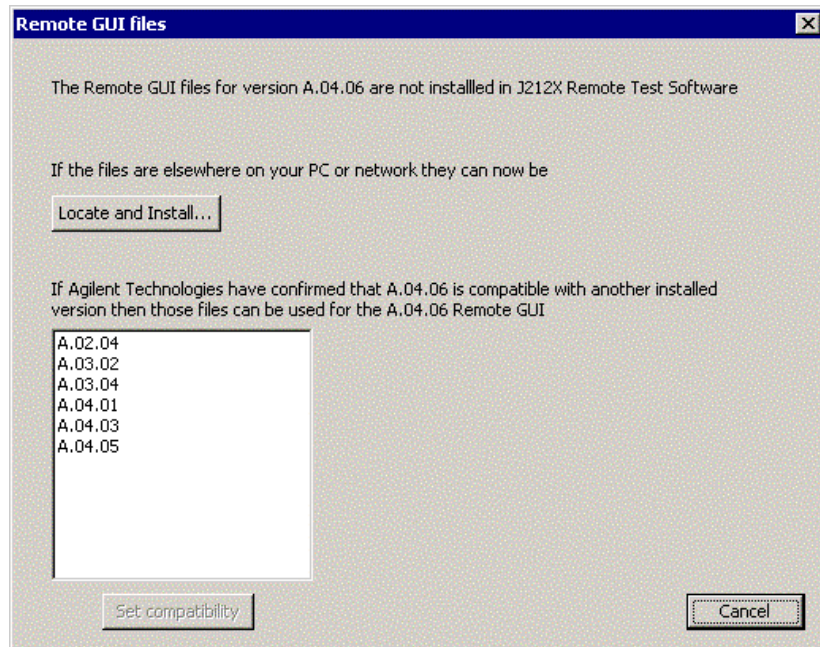
Compatibility with the Instrument Firmware

You may have to upgrade an instrument's firmware before the Remote Test Software application will operate correctly. To check compatibility with the firmware revision of your instrument, attempt connection with the instrument as shown in the [Verifying Installation](#) section.

The instrument's firmware version will be shown in the **Instrument Manager - Version** column. To run the complete Remote Test Software feature set you must have J2126A / J2127A firmware revision A.04.04 or later. If an update is required, you can obtain firmware and installation instructions from the web link referenced at the beginning of this guide.

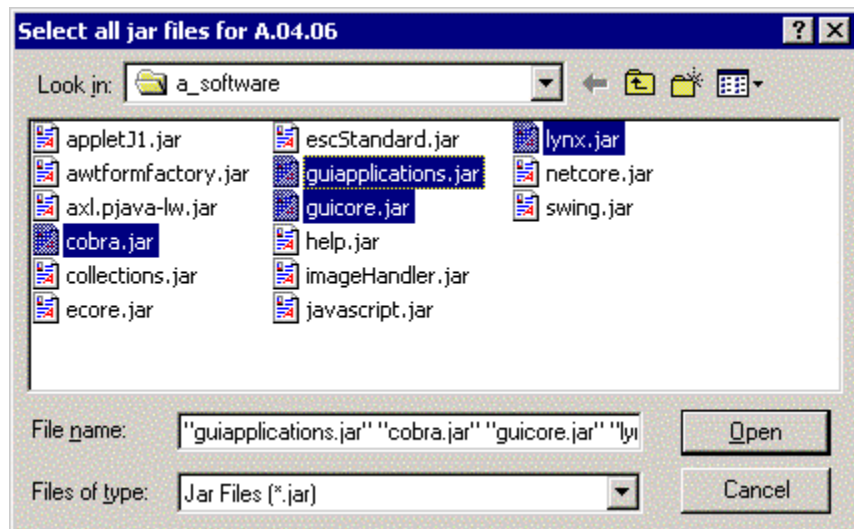
Adding to the Remote Test Software "RemoteGUI" Repository

If your installation of Remote Test Software supports your instrument's firmware revision but not the **Remote GUI**, then you need to install the GUI "jar" files for that firmware revision. You will know this because you will have been presented with the following dialog when you attempted to run the **Remote GUI** as shown in the [Verifying Installation](#) section.



To install the Remote GUI “jar” files:

- 1 Download and save the zip file corresponding to the version of firmware loaded in your instrument. This can be found from the web link referenced at the beginning of this guide.
- 2 Open the downloaded zip file and extract the contents to a temporary location on your PC.
- 3 From your PC, run the **Remote Test Software** application
- 4 Highlight and right-click your instrument in the **Instrument Manager** window. Select **Remote GUI**
- 5 You will again be presented with the **Remote GUI files** dialog box. Select **Locate and Install...**
- 6 Select the four “jar” files as shown. In some firmware revisions, **cobra.jar** and **lynx.jar** may be replaced by **app.jar**. Note that in the example below, all other files in the temporary directory have been deleted to make jar-file selection easier.



3 Troubleshooting

Table 1 Troubleshooting Guide

| Fault / Condition | Troubleshooting |
|--|--|
| <p>“Bad command or filename” when starting the application.</p> <p>Remote GUI fails to appear after choosing an instrument on <i>the Remote Test Software – Instrument Manager</i> window.</p> | <p>Ensure that the <i>Sun Personal Java Emulation Environment</i> is installed in its default directory.</p> <p>If the Remote GUI window fails to appear but can be seen in the Windows Taskbar, you may need to position the mouse on it and right-click->Minimize followed by right-click->Restore. This issue should be rectified in a future release of the Sun Personal Java Emulation Environment.</p> |
| <p>Remote interface fails to respond.</p> | <p>If the remote interface no longer responds to keyboard commands, it is possible that communication with the instrument has terminated. Use the Windows PING command to establish if the instrument is still visible on the network. If so, then restart the Remote Test Software application.</p> |
| <p>“Connection refused” while attempting to connect to an instrument.</p> | <p>Two remote users may already be connected to the instrument. Access will be allowed when one of them disconnects.</p> |
| <p>“Out of environment space” error message</p> | <p>The “create shortcut” step was not followed in the installation procedure.</p> |

4 Contacting Agilent Customer Support

For customer support details, the latest software and firmware or frequently asked questions, go to the web link highlighted at the beginning of this guide.

